



S.E.M.T. Pielstick — a brand of the MAN Diesel Group

MAN Diesel SAS - LE RONSARD PARIS NORD 2 - 22 AVENUE DES NATIONS - BP 84013 VILLEPINTE - 95931 ROISSY CH DE GAULLE Cedex (France)
Tel. : +33.1.48.17.63.00 - Fax : +33.1.48.17.63.49 - E-mail : marketing-fr@mandiesel.com - Website : http : //www.mandiesel.com

MAN Diesel SAS consolidates the Research and Development as well as Manufacturing, Sales and Servicing of the trade mark **S.E.M.T. Pielstick**.

S.E.M.T. Pielstick trade mark is recognized all around the world as a leader in the high and medium speed Diesel engines field. Its international character is further enhanced by a large network of license holders who rate among the leading industrial world groups.

The worldwide success of installations equipped with **S.E.M.T. Pielstick** engines is the result of a unique experience in the field of Diesel engines.

The **S.E.M.T. Pielstick** engines are of two types, covering a range from 500 kW to 28 000 kW (700 to 38 000 hp) :

High speed PA type used for **Merchant Marine** (propulsion and gensets), for **Navies** (propulsion and gensets), for **Land Traction** (Diesel locomotives and Mining vehicles) and **Diesel Power Plants** (including emergency gensets for Nuclear Power Plants).

Medium speed PC type used for **Merchant Marine** (propulsion), for **Navies** (propulsion) and for **Diesel Power Plants** (including emergency gensets for Nuclear Power Plants).

LIST OF LICENSEES

PA type DIESEL ENGINES

PEOPLE'S REPUBLIC OF CHINA	Shaanxi Diesel Heavy Industry Co., Ltd. (Xian) Hudong Heavy Machinery (Shanghai)
INDIA	Kirloskar Oil Engines Ltd
JAPAN	Kawasaki Heavy Industries Ltd
JAPAN	Niigata Power Systems Co Ltd
REPUBLIC OF KOREA	Hyundai Heavy Industries
REPUBLIC OF KOREA	STX Corporation
U.S.A.	Fairbanks Morse Engine -EnPro Industries, Inc.

PC type DIESEL ENGINES

PEOPLE'S REPUBLIC OF CHINA	Shaanxi Diesel Heavy Industry Co., Ltd. (Xian) Hudong Heavy Machinery (Shanghai)
JAPAN	Diesel United Ltd
JAPAN	Niigata Power Systems Co Ltd
JAPAN	JFE Engineering Corporation
REPUBLIC OF KOREA	Hyundai Heavy Industries
REPUBLIC OF KOREA	Doosan Engine Co., Ltd.
U.S.A.	Fairbanks Morse Engine -EnPro Industries, Inc.

S.E.M.T. Pielstick PA type high speed Diesel Engines

The PA range of high-speed diesel engines offers four cylinder bores: **PA4-185** rated from 590 kW to 2215 kW (800 HP to 3,000 HP) and from 1200 to 1500 rpm.

PA4-200 rated from 1060 kW to 2 650 kW (1,440 HP to 3,600 HP) and from 1 200 to 1 500 rpm.

PA5 rated from 840 kW to 3 960 kW (1,200 HP to 5,400 HP) and from 900 to 1 000 rpm.

PA6 rated from 1630 kW to 8 100 kW (2,220 HP to 11,000 HP) and from 720 to 1 050 rpm.

The PA4 types are fitted with a variable geometry combustion chamber. The PA6 type comprises CL version so-called long-stroke and B version with improved performances as well as STC version (Sequential Turbo-Charging) for marine applications. These engines run on diesel-oil as well as on heavy residual fuels.

Low emissions versions are obtained by special matching.

These engines are used in marine propulsion including high speed ferries, railway traction, dumpers, base power generation and generating sets including nuclear power plants.

S.E.M.T. Pielstick PC type medium-speed Diesel Engines

The PC range of medium-speed diesel engines offers two cylinder bores: **PC2** rated from 3 300 kW to 15000 kW (4,490 HP to 20408 HP) and from 500 to 600 rpm in two versions:

- version PC2-6 rated at 550 kW/cyl . (747 HP/cyl.)

- version PC2-6 B rated at 750 kW/cyl . (1020 HP/cyl.)

PC4 rated from 6,625 kW to 28000 kW (9,000 HP to 38040 HP) and from 360 to 430 rpm in three versions:

- version PC4-2 rated at 1215 kW/cyl . (1650 HP/cyl.)

- version PC4-2 B rated at 1400 kW/cyl . (1900 HP/cyl.)

- version PC40 L rated at 1325 kW/cyl . (1800 HP/cyl.)

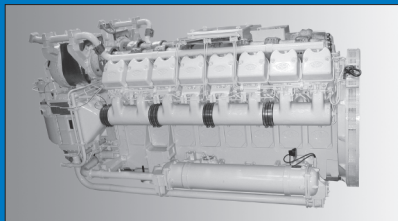
These engines run on diesel-oil as well as on heavy residual fuels.

The PC2 engines are available in gas version.

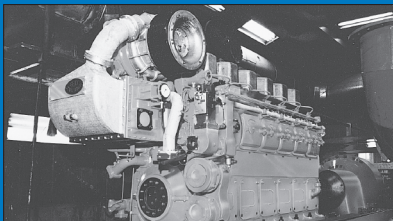
Low emissions versions are obtained by special matching.

The engines are used in marine propulsion and land-based power generation applications including nuclear power plants.

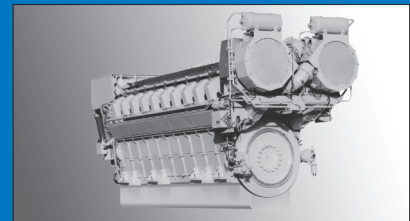
Series PA4-185/200



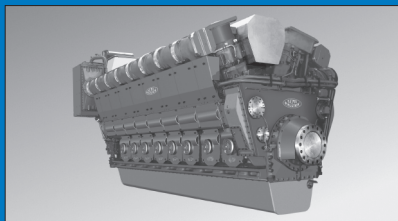
Series PA5



Series PA6



Series PC2.6



Series PC4.2

