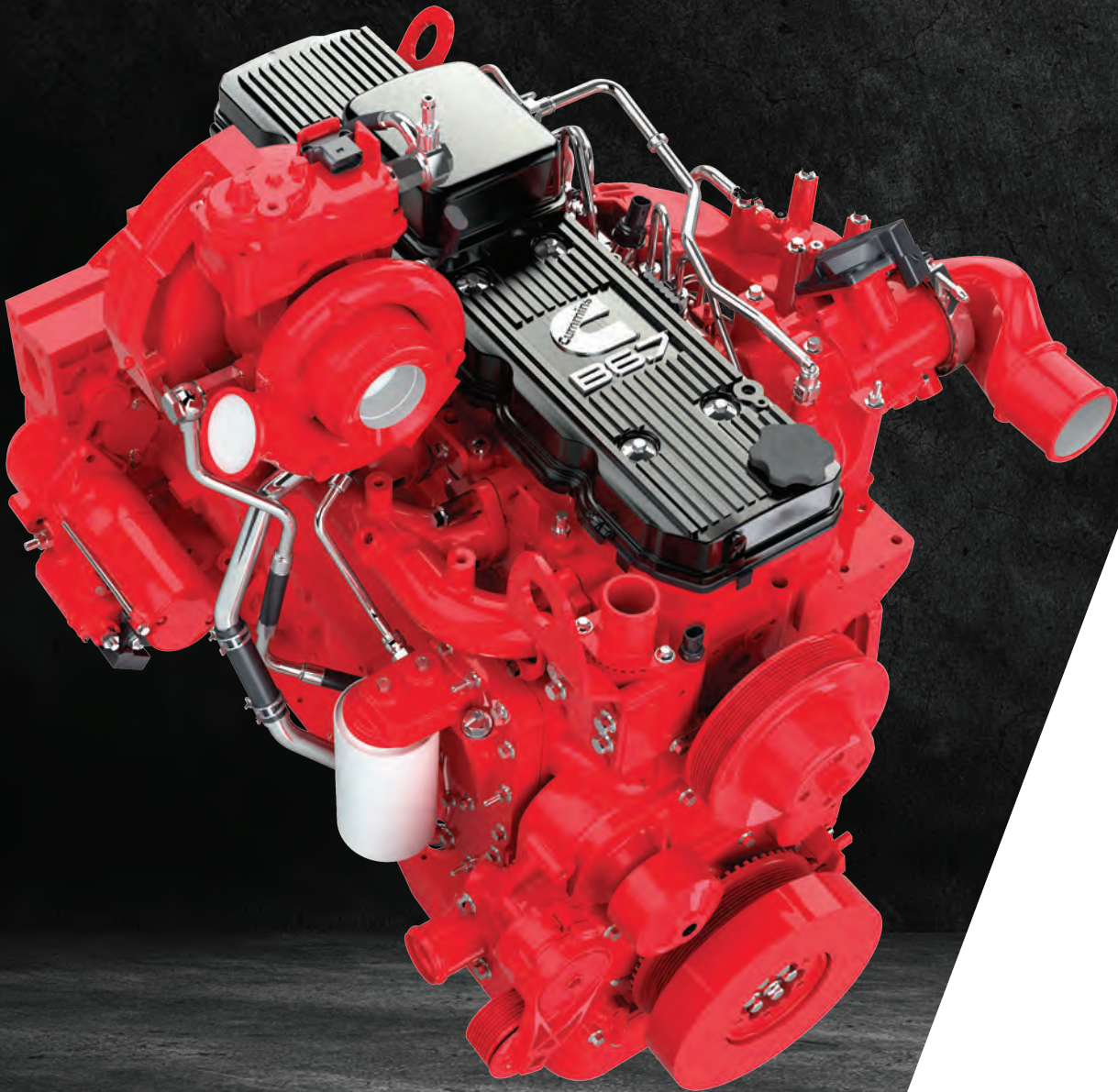


# PERFORMANCE HAS A NAME

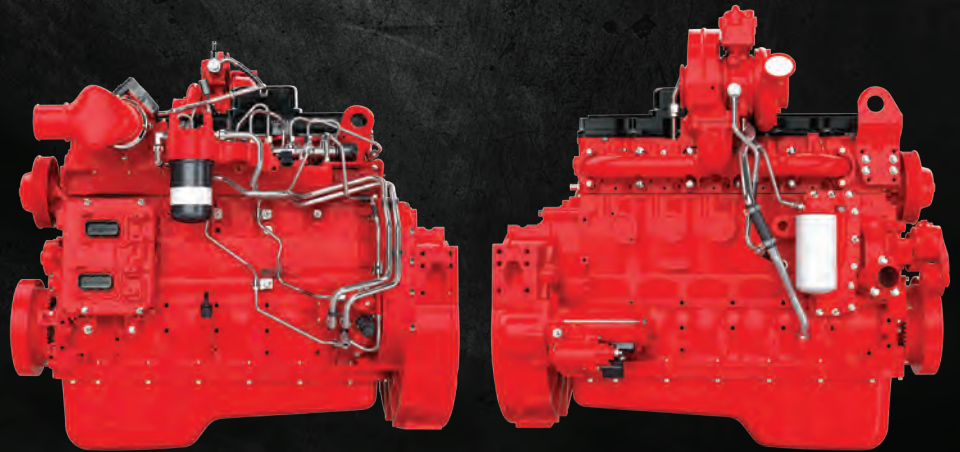
**B6.7™**  
PERFORMANCE  
S E R I E S



**FOR  
A WORLD  
THAT'S  
ALWAYS ON™**

# PERFORMANCE HAS A NAME

More power, more productivity, more uptime, and more machine capability. All with less complexity, less weight and less servicing. The B6.7 Performance Series engine is tailored to your machine, responding precisely when you need it to and maximizing productivity, even in the toughest conditions.

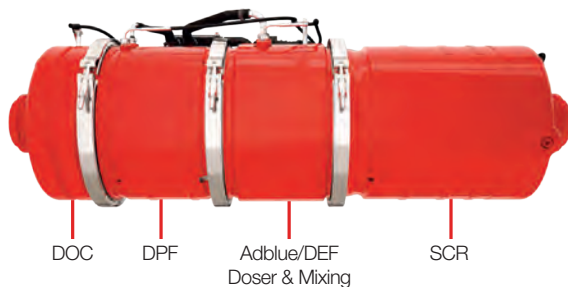


## B6.7 PERFORMANCE SERIES FOR OFF-HIGHWAY APPLICATIONS

### LESS COMPLEXITY

#### EGR-free with Single Module™ aftertreatment

- Higher NOx conversion efficiency means cooled EGR is not needed
- 99.9% of all PM removed by weight and count
- Designed to minimize total installation space
- Decoupled 'Flex' versions available for installation flexibility



### MORE PERFORMANCE

- Supports machines needing higher-speed power delivery
- High torque available from 1200 rpm drives machine productivity improvements
- Low-end torque capability delivers transient performance benefits

### MORE CAPABILITY

- Offers improved machine capability for manufacturers
- Potential downsizing opportunities, replacing higher displacement engines, while maintaining productivity

### MORE EFFICIENCY

- Less fuel consumption and noise
- Up to an additional 5-10% fuel economy improvement through Stop-Start option

### MORE GLOBAL

- Common products across emissions levels and locations
- Certified to both EU Stage V and EPA Tier 4 Final emissions standards
- Can be configured to **5,000 ppm** sulfur tolerance\*

\* 5,000 ppm capable when appropriately configured without aftertreatment for suitable regions and applications (Stage II). Emissions regulations vary by region and should be consulted to determine appropriate aftertreatment configuration.

## LESS COST OF OPERATION



**Less To Maintain**

**Breather:**  
No maintenance required

**1,000 Hour Maintenance Intervals Achievable**

**Fuel/Oil Filters:**  
Up to 1,000 hrs change interval

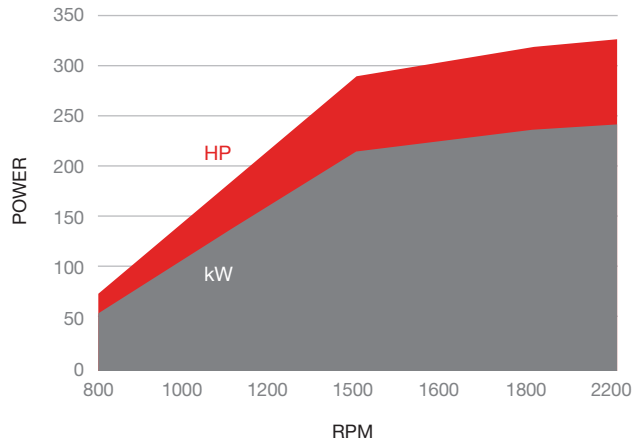
**More Uptime**

Improves your bottom line

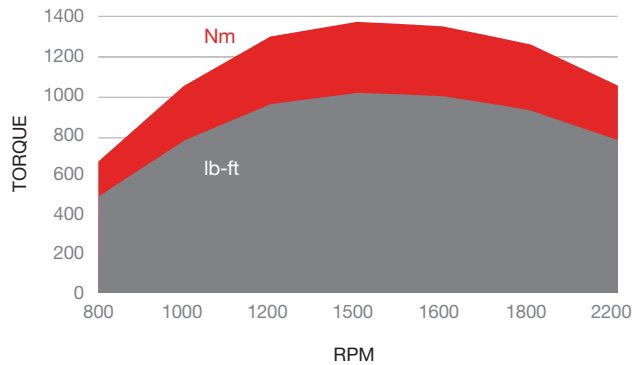
Power kW / HP	Peak Torque – N•m / lb-ft @ rpm
243 / 326	1375 / 1014 @ 1500
231 / 310	1288 / 950 @ 1500
224 / 300	1152 / 850 @ 1500
209 / 280	1288 / 950 @ 1500
195 / 261	1350 / 996 @ 1300
194 / 260	1152 / 850 @ 1500
186 / 250	1152 / 850 @ 1500
168 / 225	1186 / 875 @ 1300
149 / 200	990 / 730 @ 1300
129 / 173	881 / 650 @ 1300
116 / 155	746 / 550 @ 1300

*Additional ratings may be available; contact your distributor for more information.*

## POWER



## TORQUE



## ANY CUSTOMER, ANY QUESTION, ANY CHANNEL, **ANY TIME.**

Cummins Care is not a typical call center. We are a solutions center helping to prevent issues, provide answers quickly and reimburse accurately. We are your connection to a whole new level of customer service, to support and deliver faster personal attention with rapid results. From the moment you engage Cummins Care, you will have access to a Cummins expert with specialized skill sets, experience and in-depth knowledge to take care of your needs.

- **CUSTOMER SERVICE**
- **WARRANTY ASSISTANCE**
- **TECHNICAL SUPPORT**
- **CONNECTED SERVICE**

We are experts with advanced technology to make your life easier while providing a seamless support experience.

**Contact us at [care.cummins.com](http://care.cummins.com) or:**

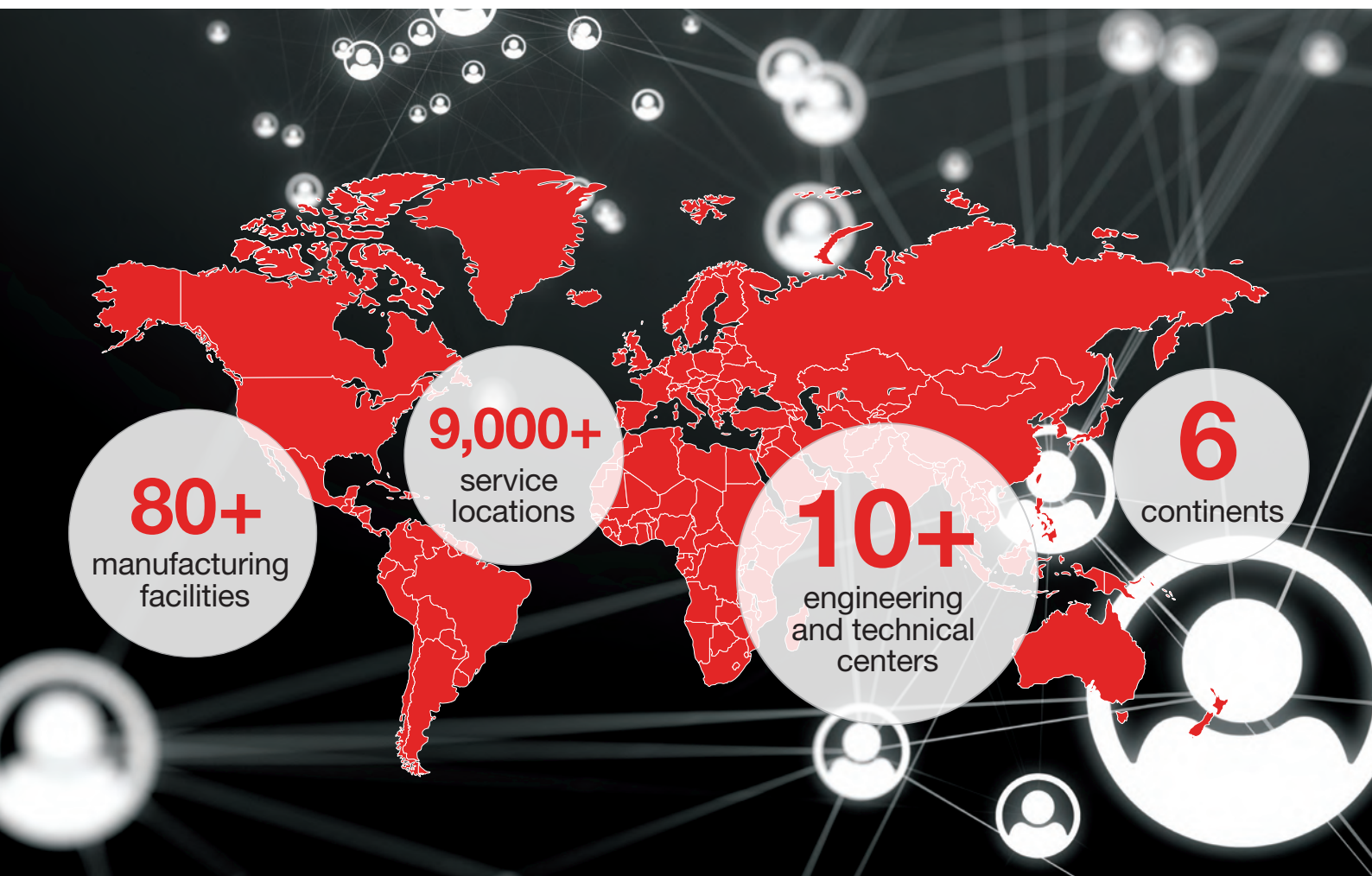
**Europe** – 00 8000 286 6467

**North America** – 1-800-CUMMINS (1-800-286-6467)



# GLOBAL SUPPORT NETWORK

CUMMINS' GLOBAL FOOTPRINT OF ENGINEERING, MANUFACTURING, AND SERVICE LOCATIONS MEANS WE ARE WHERE OUR CUSTOMERS NEED US TO BE.



TO FIND OUT MORE, CONTACT YOUR LOCAL DEALER  
OR DISTRIBUTOR VIA [CUMMINS.COM/LOCATOR](https://www.cummins.com/locator)



Cummins Inc.  
Box 3005  
Columbus, IN 47202-3005  
U.S.A.

[cummins.com](https://www.cummins.com)

Bulletin 6303311 Produced in U.K. 10/21  
©2021 Cummins Inc.